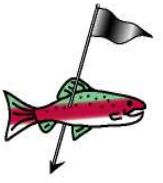


July, 2009

# Canyon Echoes



Spearfish Canyon Country Club ~ 120 Spearfish Canyon Dr. ~ Spearfish, SD 57783

Pro Shop - 605-717-4653 / Business Office 605-642-7156

Check out our website for schedule & results updates ~ [www.SpearfishCanyonCountryClub.com](http://www.SpearfishCanyonCountryClub.com)

## PRO SHOP IS STOCKED!!!

Come and check out the new clothing for 2009. We have new men's shirts and shorts from Tehama as well as a huge variety of shirts from Ashworth, Page & Tuttle, and AHEAD. The Ladies' section is chucker full with shirts and shorts from Tehama in addition to the big selection of shirts from Kate Lord and Page & Tuttle. We will receive one more shipment of new styles in early August. Don't wait – take advantage of your member discount and be sure to use up your event credit.



## God Bless the USA

## IT'S MEMBER TOURNAMENT TIME

### SAVE THE DATES

1<sup>st</sup> Annual SCCC Member-Guest  
Benefitting the Spearfish Lions Club  
**Friday July 24<sup>th</sup> – Sunday, July 26<sup>th</sup>**

*\$3000.00 Tournament Payout*

*\$1600.00 Day Money Payout*

*Premium Tee Gift*

Introducing the 1<sup>st</sup> Annual SCCC Member-Guest benefitting the Spearfish Lions Club. The event, formally known as the Lions Dilly, has been relocated on the calendar. Through much diligent planning, the tournament committee has chosen a weekend in July rather than the event's customary August date in hopes of propelling participation. We are looking forward to continuing a great tradition of golf and friendship. There are many exciting new changes to the event which we hope will add to the experience and attract new participants.



Please visit our website or stop by the pro shop to attain a tournament information packet.

### MEN'S MEMBER MATCH PLAY

Sponsored by:



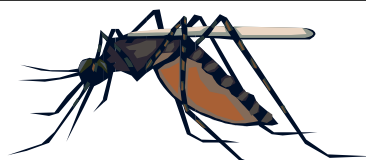
Members will be flighted and seeded by handicap. Participants will play one 18-hole match per week (excluding rally week). Play will begin the week of July 27<sup>th</sup>.

Entry Fee \$25.00

MONEY ADDED by:  
*Spearfish Motors*

Great Prizes

**Sign up in the Pro Shop**



Mosquitoes are out. We have treated the creek but make sure to use your bug spray!!

### Save the Date

*SCCC Pro-Am*

*Tuesday, August 11<sup>th</sup> @ 9:00 am*

*GREAT Prizes, GREAT Payout*

*Play with one of tomorrow's superstars*

\*part of the 2009 Dakotas Tour  
An entry/information brochure can be found in the Pro Shop

### Spearfish Canyon Country Club Junior Golf Information

July 6, 7, 9, & 10

Ages 5-7 8:00 am

Ages 8-10 9:00 am

Ages 11+ 10:00 am

August 6, 13, & 20

Ages 5-10 8:00 am

Ages 11+ 9:30 am

Cost is \$40 for members and \$45 for non-members per session. Please register by calling 717-4653 or email us at [sccc@rushmore.com](mailto:sccc@rushmore.com)

-Over-

**SCCC Member Guest  
Schedule of Events  
July 24<sup>th</sup> – July 26<sup>th</sup>**

**Friday:** Practice Round w/day game  
Social @ 4:30p – 6:00p  
Dinner specials available  
**SHOOTOUT @ 6:00p**  
Calcutta Auction @ 7:00p

**Saturday:** Breakfast @ 7:00a  
1<sup>st</sup> Round @ 8:30a  
Social @ 4:30p – 6:00p  
Putting Contest @ 4:30p  
Prime Rib Dinner @ 6:00p  
Calcutta Auction @ 7:00p

**Sunday:** Breakfast @ 7:30a  
Final Round @ 9:00a  
Putting Contest Finals  
following play  
Social following play

**\*Our intention with this event is to promote activity and friendship. As you can see, the schedule of events is quite full and we very much encourage all participants to take part in the festivities. Please visit our website for the details!!**



*Pro Shop hours for July will be 6:30 am until dark. Due to maintenance crew time constraints, our first tee time will be at 6:51 am. If you need assistance and the Pro Shop is unavailable, please call Jaime at 645-9822 or Rob at 505-385-5683.*



**THUNDERSTORMS  
ARE VERY  
DANGEROUS!!**



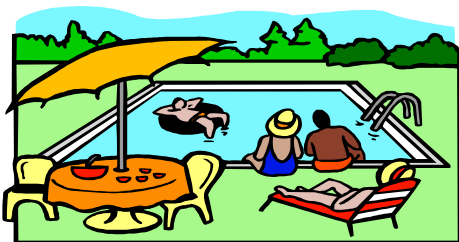
It is the time of year where thunderstorm watches and warnings are a very common occurrence (especially in the evenings). Although it is normal to want to finish your hole or your round, one should use some perspective when rolling the dice against Mother Nature. The importance of a golf shot does not loom too heavily in the grand scheme of things.

Below is an actual picture of the remains of some golf equipment after a lightning strike. The golfer was out on the course with his buddies for a regular weekly tee time. The forecast was clear and did not even predict any storms for the day. When the group was in the middle of their back nine, it began to rain. Because there was some lightning in the distance, they decided to head in. As it began to rain even harder, the group found a tree and took shelter from the weather. When the rain let up, three of the group headed for the clubhouse. The fourth decided he wanted to finish his round and was going to wait out the storm under a 50 ft. pine tree with a 10 ft. canopy. He paid the ultimate penalty.

**MORAL: Do not underestimate the awesome capabilities of Mother Nature!!**



Above is a picture of the remains of a golf bag, clubs, and a push cart that were struck by lightning in Wisconsin in late June, 2009.



As is customary, pool hours are from noon to 6 pm. We have a great staff of certified Lifeguards and look forward to seeing all the kids for some summer fun. Please inquire in the Pro Shop about swimming lessons.

**Please remember your local fundraising events in July...**

**July 17<sup>th</sup> – SDSU West River Jacks**  
**July 18<sup>th</sup> – Artemis House**  
**July 24<sup>th</sup> – MEMBER GUEST (Lions)**  
**Aug 15<sup>th</sup> – Hitting for Hospice**

\*All tournament dates/times and details may be found on our website: [spearfishcanvoncountrvclub.com](http://spearfishcanvoncountrvclub.com)

*Remember that the new snack shack is open on the back nine. It is staffed on Wednesdays and weekends.*

**POOL IS OPEN!!**